

M8 Softail 26" Rake Kit-2018 & Up



FACTORY TURN
LOCK HOLE

VERTICLE CUT
LINE

1. REMOVE COMPLETE FRONT END
2. KIT REQUIRES FRAME JIG
3. REMOVE STEERING LOCK
4. FIRST CUT WILL START FROM THE BOTTOM OF THE NECK TUBE UP TO 2-1/4". CUT PARALLEL TO BOTTOM FACE OF NECK TUBE. CUT WILL END ROUGHLY IN THE CENTER OF STEERING LOCK HOLE. VERTICLE CUT WILL BE ON THE SAME ANGLE AS THE DOWN TUBES. CUT AS CLOSE AS POSSIBLE TO DOWN TUBES. AT THIS POINT THE LOWER SECTION OF THE FACTORY NECK TUBE IS REMOVED. (SEE PAGE 2 FOR REFERENCE)

AF Kustoms

101 Coremark Court
Suite A
Bakersfield , CA 93307

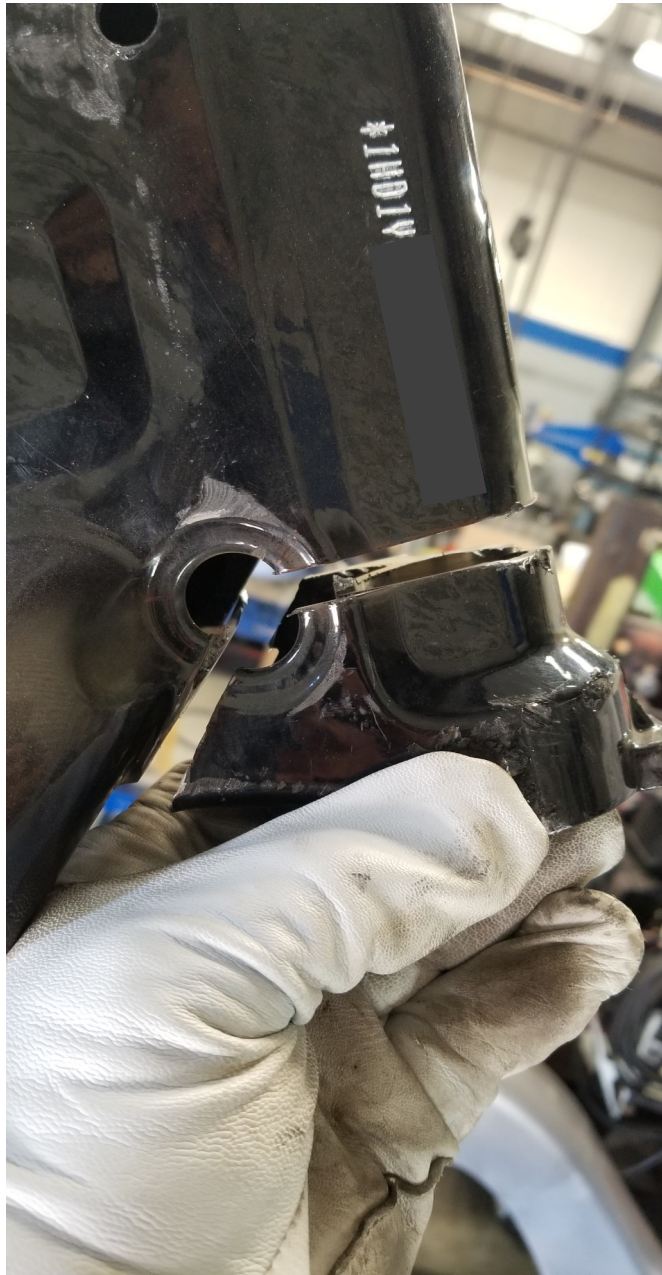
Phone: 661-364-0460
Email: afkustoms@yahoo.com



AF Kustoms

Design & Manufacturing

M8 Softail 26" Rake Kit-2018 & Up



AF Kustoms

101 Coremark Court
Suite A
Bakersfield , CA 93307

Phone: 661-364-0460
Email: afkustoms@yahoo.com

M8 Softail 26" Rake Kit-2018 & Up



5. AT THE TOP OF THE FACTORY NECK TUBE YOU WILL CUT THE FACTORY TOP BEARING CUP OFF. AT THIS POINT THE TOP OF THE NECK SHOULD BE GROUND FLUSH WITH REAR SECTION OF THE NECK CASTING.

AF Kustoms

101 Coremark Court
Suite A
Bakersfield , CA 93307

Phone: 661-364-0460
Email: afkustoms@yahoo.com



AF Kustoms

Design & Manufacturing

M8 Softail 26" Rake Kit-2018 & Up

6. FOR THE LAST CUT YOU WILL REMOVE THE LOWER LEADING CORNER OF THE FACTORY NECK TUBE. THIS ALLOWS THE NEW AF KUSTOMS NECK TO SLIDE BACK INTO POSITION. FROM THE 2-1/4" CUT LINE (FIRST CUT) YOU WILL NEED TO MEASURE UP TO 1-1/4". FROM THERE THE CUT WILL GO TO THE CENTER LINE OF THE NECK TUBE. (SEE VIEW OR PERPENDICULAR TO THE GROUND)



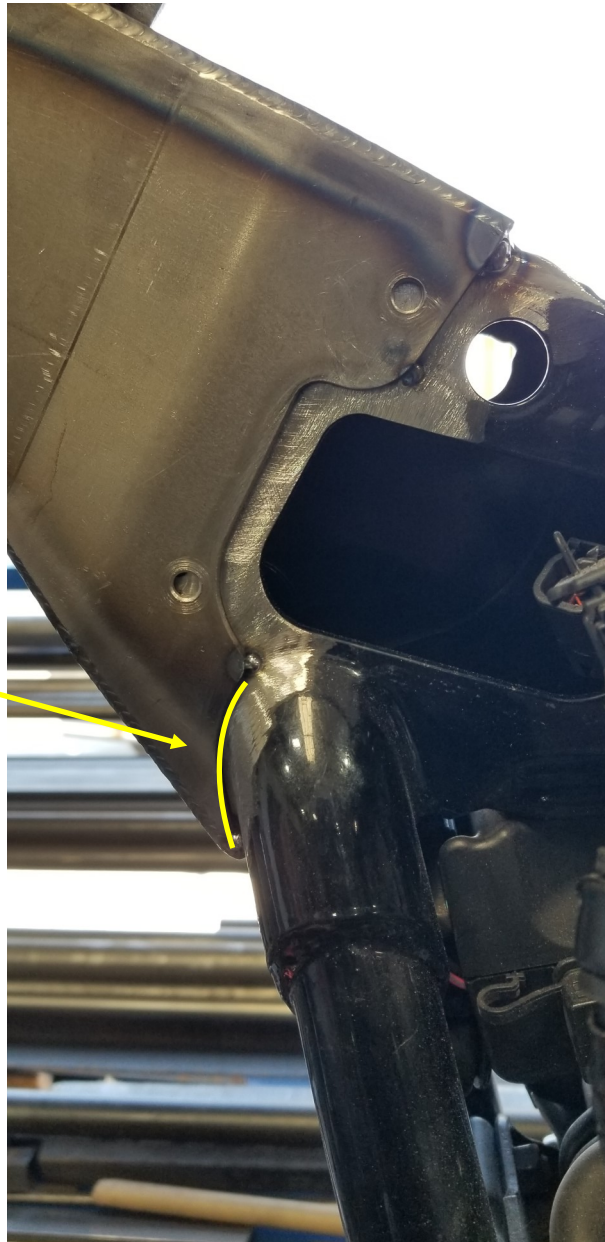
AF Kustoms

101 Coremark Court
Suite A
Bakersfield , CA 93307

Phone: 661-364-0460
Email: afkustoms@yahoo.com

M8 Softail 26" Rake Kit-2018 & Up

FIGURE 1



7. AT THIS POINT THE NECK SHOULD SLIDE INTO PLACE. NECK WILL BE INSTALLED AT 33° DEGRESS. WHEN THE NECK IS SLID ALL THE WAY BACK AND AT 33° THE LOWER SECTION OF THE NECK SHOULD BE TIGHT AGAINST THE FACTORY DOWN TUBES. (SEE FIGURE 1)

M8 Softail 26" Rake Kit-2018 & Up

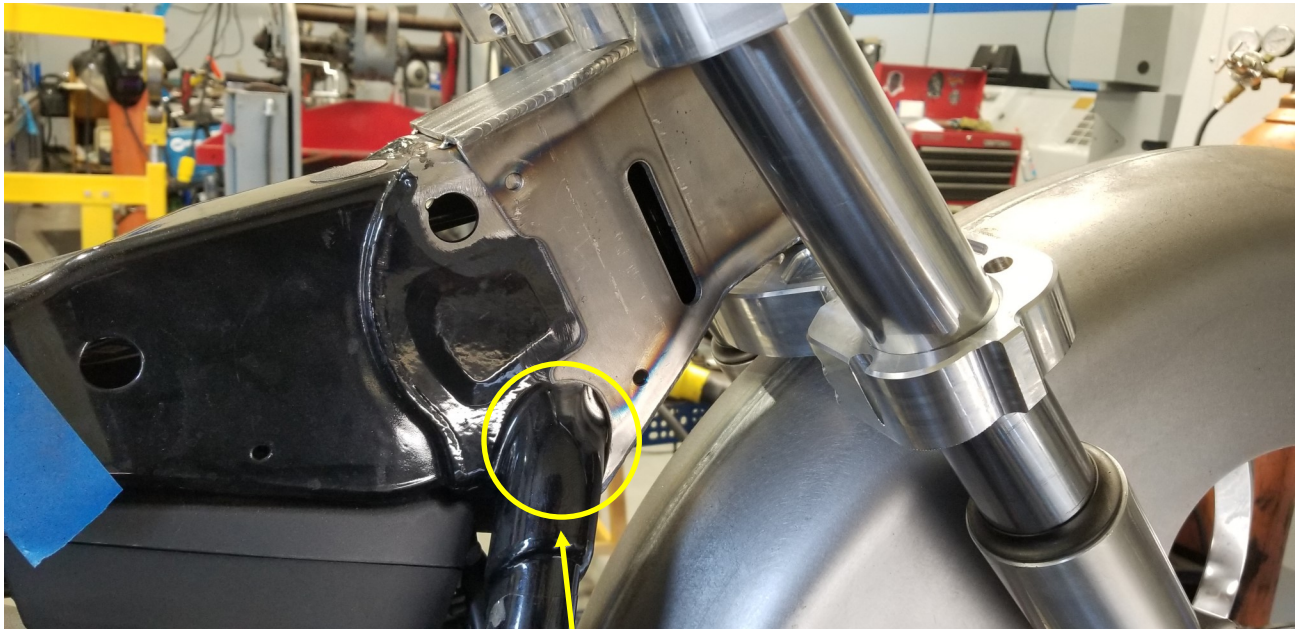


FIGURE 2

8. OPTIONAL WELDING AREA (SEE FIGURE 2). AS AN OPTION OR FOR ASTEIC VALVE YOU CAN WELD UP AND METAL FINISH THE STEERING LOCK HOLE AND RELIEF AREA TO MAKE IT MIMIC THE LEFT SIDE DOWN TUBE. SEE PAGE 9 FOR FINISHED METAL WORK

AF Kustoms

101 Coremark Court
Suite A
Bakersfield , CA 93307

Phone: 661-364-0460
Email: afkustoms@yahoo.com



M8 Softail 26" Rake Kit-2018 & Up



9. THERE SHOULD BE ROUGHLY 1/4" FROM THE END OF THE NEW NECK TO THE END OF THE FACTORY CASTED NECK.

AF Kustoms

101 Coremark Court
Suite A
Bakersfield , CA 93307

Phone: 661-364-0460
Email: afkustoms@yahoo.com



AF Kustoms

Design & Manufacturing

M8 Softail 26" Rake Kit-2018 & Up



AF Kustoms

101 Coremark Court
Suite A
Bakersfield , CA 93307

Phone: 661-364-0460
Email: afkustoms@yahoo.com



M8 Softail 26" Rake Kit-2018 & Up

ROSETTE
WELDS

FINISH
WELD
100%



10. WE STRONGLY SUGGEST A HIGHLY QUALIFIED FABRICATOR/ WELDER TO PERFORM ALL FINISH WELDING. WELD THE NECK ENTIRELY AROUND THE END OF THE NECK. ALSO, WELD UP THE REAR 1/4" HOLES AS ROSETTE WELDS.

AF Kustoms

101 Coremark Court
Suite A
Bakersfield , CA 93307

Phone: 661-364-0460
Email: afkustoms@yahoo.com



M8 Softail 26" Rake Kit-2018 & Up

TRIPLE TREES

COMPONENTS-

- UPPER TREE
- LOWER TREE
- (1) BEARING AND SEAL
- RISER AND BUSHINGS (SET)
- YOU WILL BE USING (1) FACTORY BEARING AND SEAL , ALONG WITH THE FACTORY STEM CAP/WASHER

TORQUE SPECS FOR TRIPLE TREES-

- ALL FORK LEG PINCH BOLTS—15 FT.LBS.
- UPPER TREE STEM PINCH BOLT—30 FT.LBS.
- TIGHTEN STEM TOP RETAINER CAP SO THERE IS NO DROP OUT. THERE SHOULD BE A SLIGHT DRAG WHEN TURNING FRONT END WHILE TIRE IS OFF THE GROUND.
- UTILIZE BLUE THREAD LOCKER ON ALL HARDWARE.

AF Kustoms

101 Coremark Court
Suite A
Bakersfield , CA 93307

Phone: 661-364-0460
Email: afkustoms@yahoo.com

